



Sewer System Evaluation Survey

Background

The City of Atlanta has embarked on a major effort to improve the sanitary sewer system and eliminate water quality violations from sanitary sewer overflows (SSOs). Part of the **Clean Water Atlanta (CWA)**, the SSO Project will begin with a Sewer System Evaluation Survey.

Sewer System Evaluation Survey

The Sewer System Evaluation Survey (SSES) is the critical first step in correcting SSO problems. Through the SSES, the City will investigate its entire separated sewer system, looking for breaks, collapses, and blockages. Investigative methods will include manhole inspections, smoke testing (non-toxic), dye testing, building plumbing locations/inspection, flow isolation, CCTV (Closed Circuit Television) inspection of total area lateral inspection/testing, temporary flow monitoring & rain gauge monitoring, and pump station monitoring.

The SSES is divided into 6 parts, or sewer groups, according to the severity of their condition. The SSES for Sewer Group 1, those sewers identified as having the most critical repair needs, is scheduled to begin in June 2002.



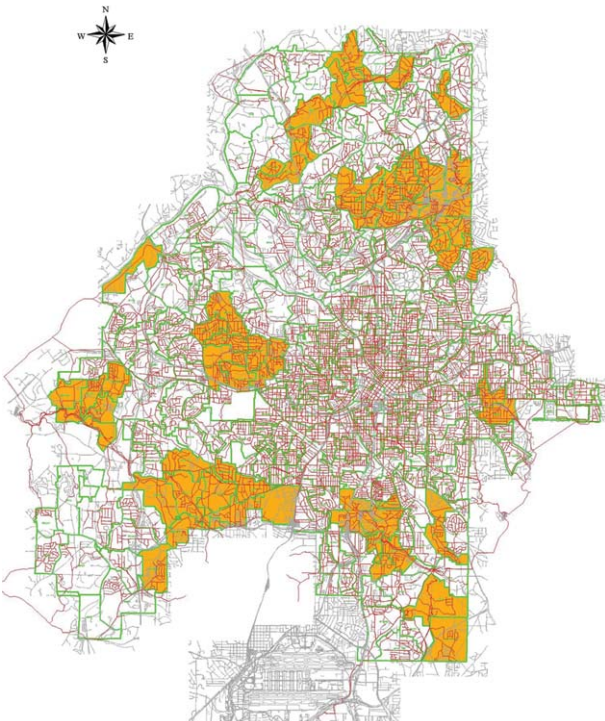
This photo, transmitted by CCTV, shows a sewer on the verge of collapsing

Sewer Group 1

Sewer Group I (SG 1) is located throughout the city in 52 sewersheds within the following basins: Peachtree Creek, Utoy Creek, South River, Proctor Creek, Nancy Creek, Sugar Creek, Camp Creek, and Sandy Creek. SG 1 evaluation includes the inspection of approximately 8000 manholes and the investigation of approximately 294 miles of sanitary sewers.

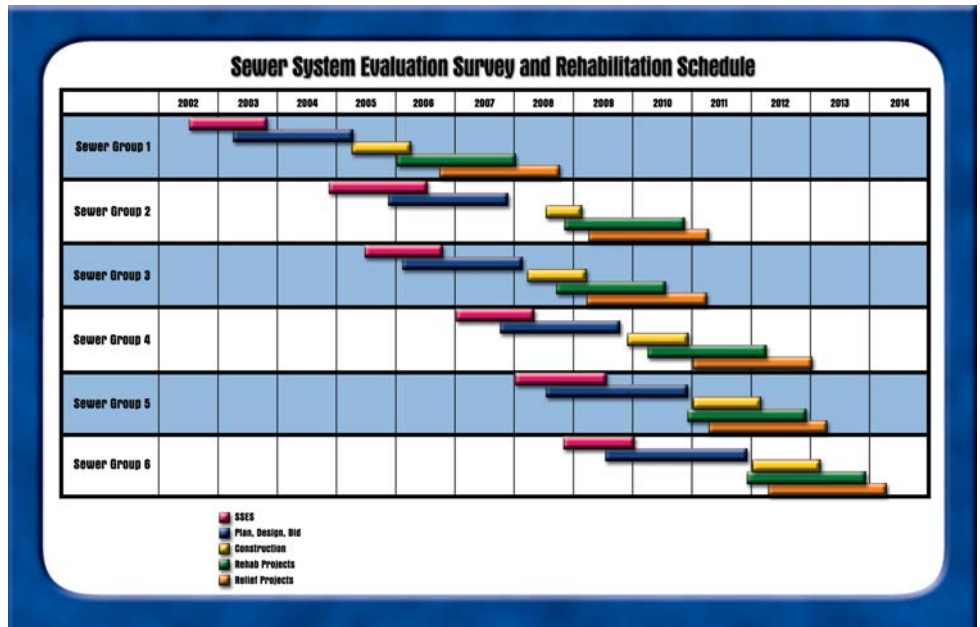
Immediate Maintenance and Repair Needs

During the survey of each sewer group, some minor construction tasks will be completed to address immediate repair needs. These construction tasks will include: exposing and raising manholes, cleaning manholes and sewers, accessing the public sewer from outside the public Right of Way, when necessary, delineation of easements, point repairs, and construction of additional manholes.



Map of Sewer Group 1; SSES is scheduled to begin in June 2002

Following the survey and evaluation period, the field information will be analyzed to identify specific locations in the sewer system where construction, rehabilitation, and repair work are needed. The rehabilitation and repair work is designed to eliminate groundwater and stormwater entering the collection system, and will be accomplished using the least disruptive techniques possible, such as trenchless technology (i.e., cured-in-place pipe or pipe-bursting techniques).



Project Duration

Work on each sewer group will last approximately 3 to 4 years: 1 year for evaluation, 1 year to design a repair plan, and 18 months for construction. However, work on each sewer group will overlap. Once the evaluation phase is completed for SG 1 and the planning phase begins, the evaluation phase for SG 2 will begin.

Public Involvement

The City held 9 community meetings throughout Sewer Group 1 in April 2002. The city will continue to provide citizens with information on the SSES project throughout the duration of the project through mailings, meetings, phone messages and other educational efforts. The City has also established a website and hotline for more information: www.cleanwateratlanta.org or call the CWA Hotline at 404-529-9211.

CITY OF ATLANTA

Shirley Franklin
 Mayor

City Council
Cathy Woolard
 President

- | | |
|-------------------|-----------------|
| Carla Smith | Debi Starnes |
| Ivory Young | Cleta Winslow |
| Natalyn Archibong | Anne Fauver |
| Howard Shook | Clair Muller |
| Felicia Moore | C.T. Martin |
| Jim Maddox | Derrick Boazman |
| Cesar Mitchell | |
| Mary Norwood | |
| H. Lamar Willis | |

Department of Watershed Management
 Jack Ravan, Commissioner

