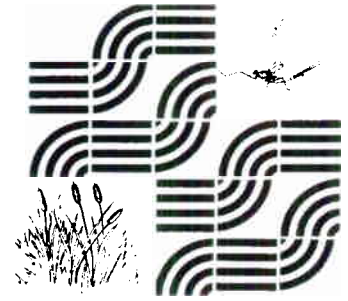


GEORGIA

Adopt-A-Stream



Department of Natural Resources
Environmental Protection Division

The goals of Georgia Adopt-A-Stream are to (1) increase public awareness of the State's nonpoint source pollution and water quality issues, (2) provide citizens with the tools and training to evaluate and protect their local waterways, (3) encourage partnerships between citizens and their local government, and (4) to collect quality baseline water quality data. To accomplish these goals, Georgia Adopt-A-Stream encourages individuals and communities to adopt sections of streams, wetlands, lakes or rivers. Manuals, training, and technical support are provided through Georgia EPD, Adopt-A-Stream Regional Training Centers and community/watershed Adopt-A-Stream organizers throughout the state.

Getting Started

- Locate a stream, wetland or lake you would like to monitor.
- Obtain the introductory manual, *Getting To Know Your Watershed* from the Georgia Adopt-A-Stream office.
- Read the manual and follow the directions to register your stream, wetland or lake.
- Conduct a Watershed Assessment using the data forms and directions in the manual.
- Plan one cleanup event and one outreach activity for the year.
- Call Georgia Adopt-A-Stream to find out about additional manuals and workshops for visual, biological and chemical monitoring.



Free Resources Available from Georgia Adopt-A-Stream

Getting To Know Your Watershed Manual
Visual Stream Survey Manual
Biological and Chemical Stream Monitoring Manual
Wetland Monitoring Manual
Adopt-A-Lake Manual
Adopt-A-Stream Teacher's Guide Manual
Georgia Adopt-A-Stream: It All Begins With You
and *Watershed Walk* video
You're the Solution To Water Pollution brochure and poster
Georgia Adopt-A-Stream Newsletter
Training Workshops

Contact: Georgia Adopt-A-Stream
4220 International Parkway, Suite 101
Atlanta, GA 30354
404-675-1636 or 1639
michele_droszcz@mail.dnr.state.ga.us
harold_harbert@mail.dnr.state.ga.us
www.riversalive.org/aas.htm



Visual Stream Survey

What

- A visual & physical evaluation of stream conditions

Why

- Critical water pollutants and habitat damage, such as sedimentation, erosion and excessive nutrients, can be detected through the visual survey

When

- Monitor quarterly or once every season



Chemical Monitoring

What

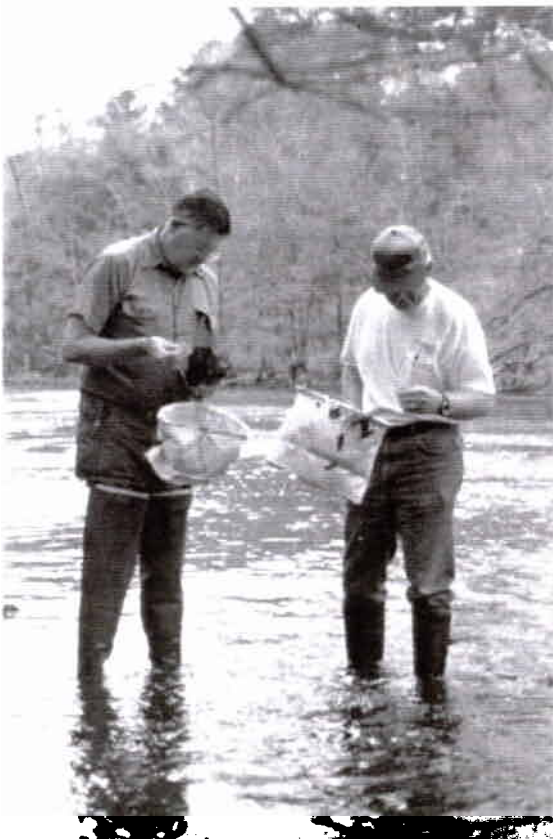
- The basic tests are pH, dissolved oxygen, temperature and settleable solids
- Advanced tests include phosphates, nitrates and alkalinity

Why

- Oxygen is needed for respiration
- Temperature is directly related to biological activity
- pH measures the acidity or alkalinity of the water
- Phosphates and nitrates are nutrients that cause algal blooms when present in excess

When

- Monitor once a month



Biological Monitoring

What

- An inventory of Macroinvertebrates in the stream

Why

- The overall health of the stream can be determined by the diversity of macroinvertebrates found. The presence of macroinvertebrates indicate the quality of both water and habitat

When

- Monitor quarterly or once every season

Georgia Adopt-A-Stream
4220 International Parkway, Suite 101
Atlanta, GA 30354
404-675-1636 or 1639
michele_droszcz@mail.dnr.state.ga.us
harold_harbert@mail.dnr.state.ga.us
www.riversalive.org/aas.htm