

**Capacity Credit Balance**

Capacity Limited Basins or Areas  
as of June 12, 2006

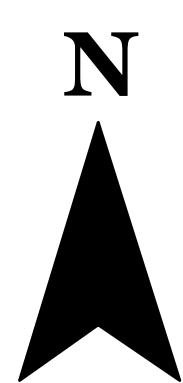
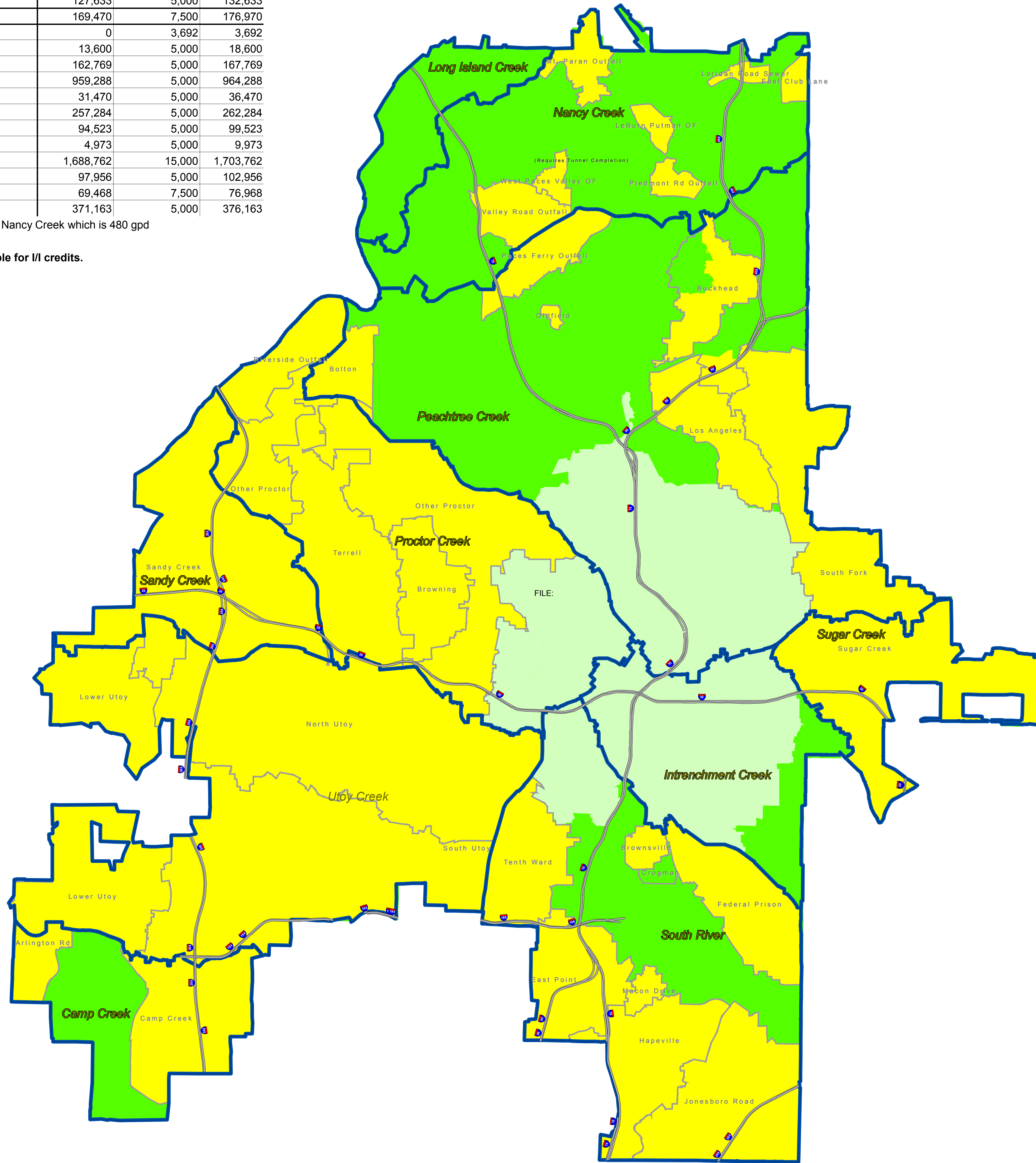
# Capacity Limited Areas

June 12, 2007

Basin or CLA	Basic Credit Bank	Reserve for Minor <sup>1</sup> Flows	
	GPD	GPD	
Camp Creek (CMC02, 02A, 02B)	554,599	5,000	559,599
Camp Creek - Arlington Rd Outfall	283,310	5,000	288,310
Nancy Creek - East Club Lane Outfall*	4,216	5,000	9,216
Nancy Creek - Lebrun Putman Circle Outfall*	4,024	5,000	9,024
Nancy Creek - Loridan Road Outfall*	760	5,000	5,760
Nancy Creek - Mt. Paran Outfall*	221	0	221
Nancy Creek - Piedmont Road Outfall*	0	0	0
Nancy Creek - Valley Road Outfall*	0	602	602
Nancy Creek - West Paces Valley Outfall*	0	0	0
Peachtree Creek - Bolton Rd Outfall	46,410	5,000	51,410
Peachtree Creek - Buckhead Sewer Trunk	957,522	5,000	962,522
Peachtree Creek - Howell Mill Trunk	0	0	0
Peachtree Creek - Los Angeles Ave Trunk	778,240	5,000	783,240
Peachtree Creek - Paces Ferry Outfall	4,804	5,000	9,804
Peachtree Creek - Peachtree Battle/Oldfield Rd Outfall	37,954	5,000	42,954
Peachtree Creek - South Fork	411,537	5,000	416,537
Proctor Creek - Browning St Outfall	850,704	5,000	855,704
Proctor Creek - Other	290,133	30,000	320,133
Proctor Creek - Riverside Outfall	127,633	5,000	132,633
Proctor Creek - Terrell Creek Trunk	169,470	7,500	176,970
Sandy Creek	0	3,692	3,692
South River - Brownsville Outfall	13,600	5,000	18,600
South River - East Point Trunk	162,769	5,000	167,769
South River - Federal Prison Trunk	959,288	5,000	964,288
South River - Hapeville Outfall	31,470	5,000	36,470
South River - Jonesboro	257,284	5,000	262,284
South River - Macon Dr Outfall	94,523	5,000	99,523
South River - Tenth Ward	4,973	5,000	9,973
Sugar Creek	1,688,762	15,000	1,703,762
Utoy Creek - Lower Utoy Creek Trunk	97,956	5,000	102,956
Utoy Creek - North Utoy Creek Trunk	69,468	7,500	76,968
Utoy Creek - South Utoy Creek Trunk	371,163	5,000	376,163

<sup>1</sup> Minor Flows are less than 2,500 gpd except for Nancy Creek which is 480 gpd

\*Outfalls with local issues/bottle-necks, eligible for I/I credits.



**Legend**

- Non-Capacity Limited Area (Separate Sanitary Sewer Area)
- Non-Capacity Limited Area (Combined Sewer Area)
- Sewer Basin

1  
Miles

File Name: \\Pmt-doserver\GIS\Projects\GIS\Projects\T SewerCapacity\CLA\Certification\June2007\CapacityLimited11x17.mxd

The Program Management Team and the City of Atlanta in no way ensures, represents or warrants the accuracy and/or reliability of the Data and/or map products being developed. The user of the data and/or map product expressly assumes all risks and liabilities which may arise from the information-mapping product and Data furnished to the User by the Program Management Team or the City of Atlanta.